

MOM4 - Maintenance Operations Management

Relevant Information, at the Right Time, at the Right Place, in the Right Form, to the Right People

NearSoft Europe provides methodology and technology for real-time collaborative operational workflow inside an enterprise. Our mission is to improve our customer's efficiency and reducing their operational costs by providing the necessary digital tools for implementing a true **Lean Six Sigma (6σ)** and **Industry 4.0** initiatives.

Facilities operations and maintenance encompasses a broad spectrum of services, competencies, processes, and tools required to assure a facility is operating at peak efficiency. **MOM4Maintenance** is an automated system for managing preventative and reactive maintenance of an organization's facilities and assets. It gives the workers tools to work efficiently and enter data about repairs, parts, materials, etc. It gives managers control and visibility into maintenance histories, compliance, and the condition of company property. By optimizing workflows for back-end upkeep and eliminating equipment downtime, MOM4Maintenance helps organizations devote more time and resources to their bottom line.

MOM4 Digital Platform

Cloud IIoT Big Data
VR / AR OT / IT

Military Operations **Maintenance Operations** **Manufacturing Operations**


Planning


Real-Time Scheduling

Execution

Reports & KPI

RAMI4 – Reference Architectural Model for Industry 4.0

 www.MOM4.eu

 www.nearsoft.eu

Complete and accurate data is a MUST for maintenance and facilities so powerful decisions can be made to minimize costs, increase productivity, pass audits and guarantee customer satisfaction. MOM4Maintenance is revolutionizing how organizations are managed, it is ideal for virtually any facility – large or small, and facilitate easy roll-outs at multiple sites.



Maintenance Operations Management is the collection of activities which coordinate, direct, and track the functions that maintain the equipment, tools and related assets to ensure their availability and ensure scheduling for **reactive, periodic, preventive, or proactive** maintenance. MOM4Maintenance provides visibility into resource issues and a detailed history of all activities. With this level of visibility, it is possible to determine true performance values for equipment and personnel.

Maintenance Requests Management

- Submission of Observation Protocols with attached pictures, documents, GIS coordinates, CAD drawings, etc. using a web interface
- Real-time alerts and notifications from Wireless sensors and control systems such as IoT, SCADA, BAS, BMS, etc.
- Generating Maintenance Orders directly from a Maintenance Request
- Providing a text message or email alerts

Spare Parts Management

- Optimize inventory management and establish control polices using MIN-MAX (ROP-ROQ) levels
- Categorization of spare parts
- Forecast spares/material requirements
- Manage multi-store locations



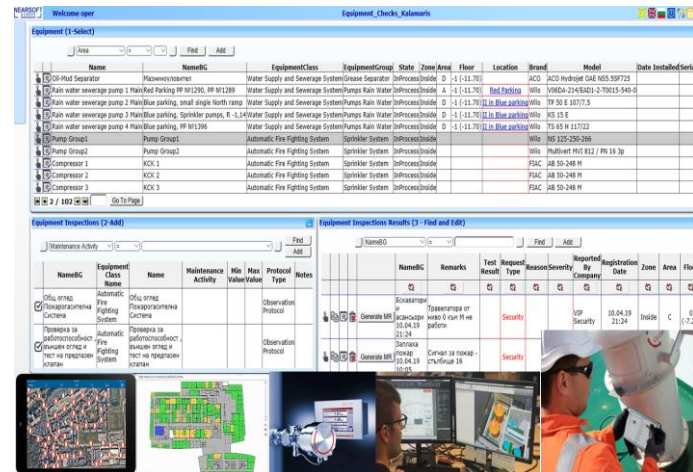
Job Execution

- Working Order progress workflow with statuses
- Approval and Claims management, Service Protocols
- Entering actual values, times, notes, etc.
- Web based UI on mobile devices

Report, Analyses and KPI

- Browser based, easy to customize, real-time reporting
- Work and Asset Performance reports, Expected vs. Actual, Stock levels, MTR, MTBF, etc.
- Rich graphical representation – Stacked columns, Pareto, Standard Deviation, Distribution, etc.
- Easy to customize maintenance reports generator
- Export to Excel, PDF, and/or any ERP

MOM4Maintenance software provides the essential features that you need to manage, organize and track your maintenance operations. MOM4 is a future proof investment as it is based on common standards (IEC 62 264, OPC, B2MML, etc) and Reference Architectural Model for Industry 4.0 – RAMI 4.0.



Asset Control and Supervision

- Manage asset registration, integrity and performance
- Multi-level, tree structure and categorization
- Real-time status and availability
- Assignment of documents and drawings

Maintenance Activities Library

- Predefined activities with assigned resource requirements (materials, personnel, tools, etc.)
- Expected duration and instructions
- Frequency – Yearly, Monthly, Weekly, Daily, etc.

Planning and Scheduling

- Maintenance and Working Orders (Jobs)
- Yearly Maintenance Plan preparation
- Working Calendar and Subcontractor Management
- Work and Capacity Balancing - adjust assignments to resolve allocation conflicts
- Visualization and Real-Time status in interactive Gantt and Calendar components

